



The New York State School Report Card [2012 - 13]

NAME: PERU CSD

BEDS Code: 091101060000

SUPERINTENDENT : Patrick Brimstein

ADDRESS: 17 SCHOOL ST, PERU, NY 12972

PHONE: (518) 643-6002

The New York State Report Card is an important part of the Board of Regents' effort to raise learning standards for all students. It provides information to the public on school/district enrollment and staff, student performance, and other measures of school and district performance. Knowledge gained from the report card on a school's or district's strengths and weaknesses can be used to improve instruction and services to students.

PERU CSD Enrollment (2012 - 13)

K-12 Enrollment: 1,971

These enrollment data are collected as part of NYSED's Student Information Repository System (SIRS). These counts are as of "BEDS Day" which is typically the first Wednesday in October. Available are enrollment counts for public and charter school students by various demographics for the 2012 - 13 school year. For nonpublic school enrollment data please see the [Non-Public School Enrollment and Staff](#) information on our Information and Reporting Services webpage

Students by Gender

Male		Female	
1,032	52%	939	48%

Students by Ethnicity

American Indian or Alaska Native	Black or African American	Hispanic or Latino	Asian or Native Hawaiian/Other Pacific Islander	White	Multiracial
3	46	23	20	1,856	23
0%	2%	1%	1%	94%	1%

Other Groups

Limited English Proficient Students		Students with Disabilities		Economically Disadvantaged Students	
—	—	308	16%	807	41%

*Fields with dashes have data suppressed in order to prevent reporting personally identifiable information.

Students by Grade

Kindergarten (Full Day)	1st Grade	2nd Grade	3rd Grade	4th Grade	5th Grade
137	139	147	131	134	142
6th Grade	Ungraded Elementary	7th Grade	8th Grade	9th Grade	10th Grade
154	10	175	165	166	156
11th Grade	12th Grade	Ungraded Secondary			
150	151	14			

Average Class Size (2012 - 13)

Common Branch

21

Grade 8 English

Grade 8 Mathematics

Grade 8 Science

Grade 8 Social Studies

23

Grade 10 English

19

Grade 10 Mathematics

23

Grade 10 Science

24

Grade 10 Social Studies

19

23

19

22

Free and Reduced-Price Lunch (2012 - 13)

Eligible for Free Lunch

590

30%

Eligible for Reduced-Price Lunch

188

10%

Attendance and Suspensions (2011 - 12)

Annual Attendance Rate

95%

Student Suspensions

94

5%

Teacher Turnover Rate (2011 - 12)

Turnover Rate of Teachers with Fewer Than Five Years of Experience

33%

Turnover Rate of All Teachers

12%

Staff Counts (2012 - 13)

Principals

4

Assistant Principals

1

Other Professional Staff

18

Paraprofessionals

54

Teacher Qualifications (2010-11 through 2012-13)

	2010 - 11	2011 - 12	2012 - 13
Total Number of Teachers	185	175	173
Percent with No Valid Teaching Certificate	0%	0%	0%
Percent Teaching Out of Certification	0%	0%	1%
Percent with Fewer Than Three Years of Experience	6%	2%	3%
Percentage with Master's Degree Plus 30 Hours or Doctorate	30%	30%	32%
Total Number of Core Classes	408	406	372
Percent Not Taught by Highly Qualified Teachers in This District	0%	1%	1%
Percent Not Taught by Highly Qualified Teachers Statewide	2%	2%	3%
Percent Not Taught by Highly Qualified Teachers in High-Poverty Schools Statewide	5%	4%	6%
Percent Not Taught by Highly Qualified Teachers in Low-Poverty Schools Statewide	0%	1%	1%
Total Number of Classes	650	616	593
Percent Taught by Teachers Without Appropriate Certification	0%	0%	2%

High School Completers (2012 - 13)

Results by Student Group

Number of Students	Number of Students	Regents Diploma		Regents with Advanced Designation	
		Number of Students	Percent of Graduates	Number of Students	Percent of Graduates
151	146	129	88%	56	38%
129	129	126	98%	56	43%
22	17	3	18%	0	0%

Results by Student Group

Number of Students	Percent of Graduates	Local Diplomas		Individualized Education Program (IEP) Diplomas	
		Number of Students	Percent of Graduates	Number of Students	Percent of Completers
0	0%	17	12%	5	3%
0	0%	3	2%	0	0%
0	0%	14	82%	5	23%

High School Non-completers (2012 - 13)

Results by Student Group	Dropped Out		Entered Approved High School Equivalency Preparation Program		Total Noncompleters	
	Number of Students	Percent of Students	Number of Students	Percent of Students	Number of Students	Percent of Students
All Students	17	3%	0	0%	17	3%
General Education	12	2%	0	0%	12	2%
Students with Disabilities	5	4%	0	0%	5	4%

Post-graduation Plans of Completers (2012 - 13)

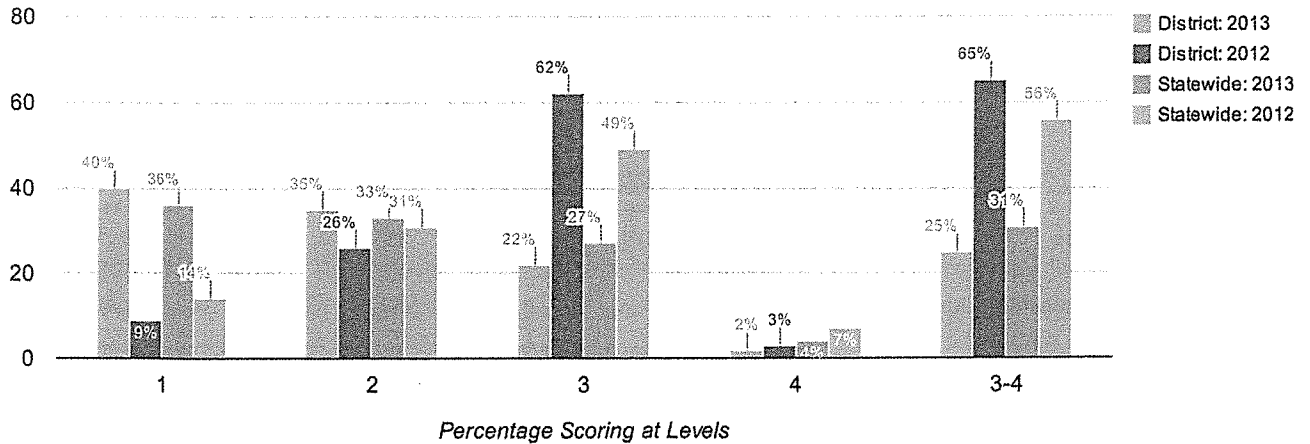
Results by Student Group

	To Four-Year College		To Two-Year College		To Other Post-Secondary		To the Military	
	Number of Students	Percent of Completers	Number of Students	Percent of Completers	Number of Students	Percent of Completers	Number of Students	Percent of Completers
All Students	52	34%	58	38%	7	5%	5	3%
General Education	52	40%	53	41%	3	2%	4	3%
Students with Disabilities	0	0%	5	23%	4	18%	1	5%

Results by Student Group

	To Employment		To Adult Services		To Other Known Plans		Plan Unknown	
	Number of Students	Percent of Completers	Number of Students	Percent of Completers	Number of Students	Percent of Completers	Number of Students	Percent of Completers
All Students	24	16%	1	1%	0	0%	4	3%
General Education	14	11%	0	0%	0	0%	3	2%
Students with Disabilities	10	45%	1	5%	0	0%	1	5%

Grade 3 English Language Arts



2013

2012

292

665

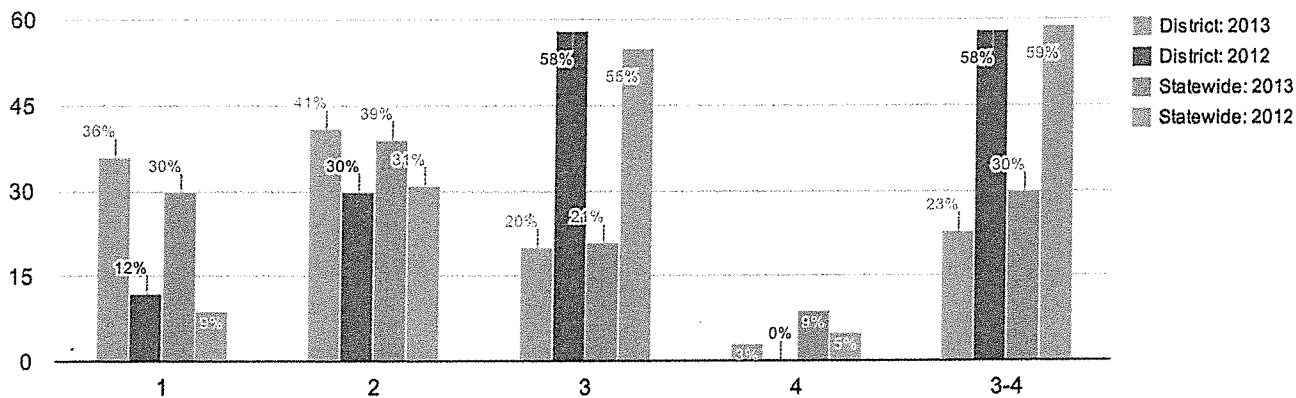
Results by Student Group

2013

2012

	Total Tested	Percent Scoring at Level(s)				% Proficient (Levels 3 and 4)	Total Tested	Percent Scoring at Level(s)				% Proficient (Levels 3 and 4)
		1	2	3	4			1	2	3	4	
All Students	129	40	35	22	2	25	137	9	26	62	3	65
General Education	114	33	39	25	3	28	119	2	27	68	3	71
Students with Disabilities	15	93	7	0	0	0	18	56	22	22	0	22
Asian or Native Hawaiian/Other Pacific Islander	0	0	0	0	0	0	3	—	—	—	—	—
Black or African American	5	—	—	—	—	—	2	—	—	—	—	—
Hispanic or Latino	1	—	—	—	—	—	1	—	—	—	—	—
White	122	39	36	22	2	25	130	9	27	62	2	64
Multiracial	1	—	—	—	—	—	1	—	—	—	—	—
Small Group Total	7	57	14	29	0	29	7	0	14	57	29	86
Female	70	34	39	26	1	27	62	2	26	69	3	73
Male	59	47	31	19	3	22	75	15	27	56	3	59
English Proficient	129	40	35	22	2	25	137	9	26	62	3	65
Economically Disadvantaged	61	54	33	13	0	13	53	15	38	43	4	47
Not Economically Disadvantaged	68	28	37	31	4	35	84	5	19	74	2	76
Migrant	1	—	—	—	—	—	0	0	0	0	0	0
Not Migrant	128	—	—	—	—	—	137	9	26	62	3	65

Grade 4 English Language Arts



Mean Score

Percentage Scoring at Levels

2013

2012

290

670

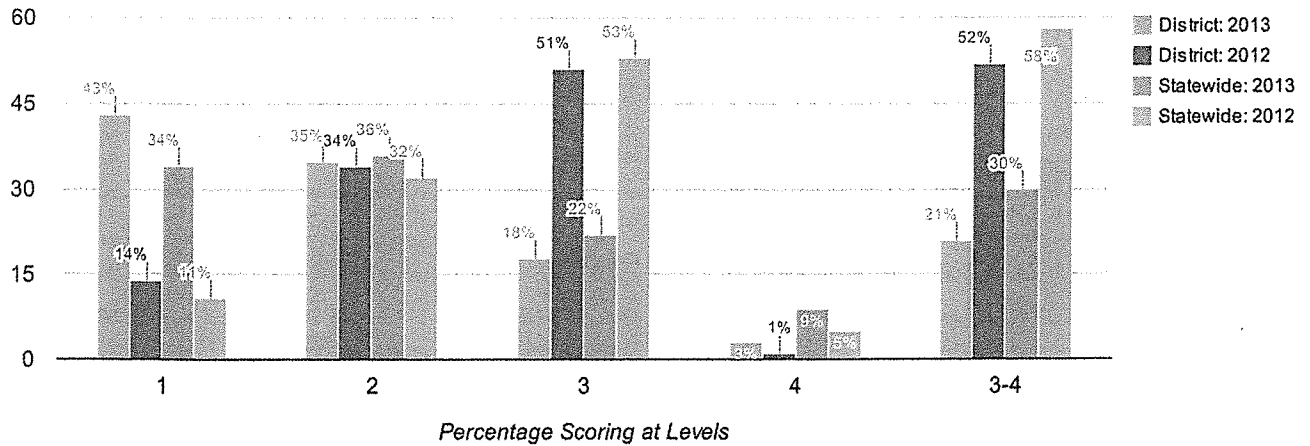
Results by Student Group

2013

2012

	Total Tested	Percent Scoring at Level(s)				% Proficient (Levels 3 and 4)	Total Tested	Percent Scoring at Level(s)				% Proficient (Levels 3 and 4)
		1	2	3	4			1	2	3	4	
All Students	132	36	41	20	3	23	139	12	30	58	0	58
General Education	109	25	50	22	4	26	120	4	31	65	0	65
Students with Disabilities	23	91	0	9	0	9	19	63	26	11	0	11
Asian or Native Hawaiian/Other Pacific Islander	2	—	—	—	—	—	3	—	—	—	—	—
Black or African American	3	—	—	—	—	—	0	0	0	0	0	0
Hispanic or Latino	1	—	—	—	—	—	0	0	0	0	0	0
White	125	36	42	18	3	22	135	—	—	—	—	—
Multiracial	1	—	—	—	—	—	1	—	—	—	—	—
Small Group Total	7	43	14	43	0	43	139	12	30	58	0	58
Female	58	34	45	17	3	21	73	14	25	62	0	62
Male	74	38	38	22	3	24	66	11	36	53	0	53
English Proficient	132	36	41	20	3	23	139	12	30	58	0	58
Economically Disadvantaged	54	57	28	15	0	15	60	20	30	50	0	50
Not Economically Disadvantaged	78	22	50	23	5	28	79	6	30	63	0	63
Migrant	0	0	0	0	0	0	1	—	—	—	—	—
Not Migrant	132	36	41	20	3	23	138	—	—	—	—	—

Grade 5 English Language Arts



Mean Score

Percentage Scoring at Levels

2013

2012

287

666

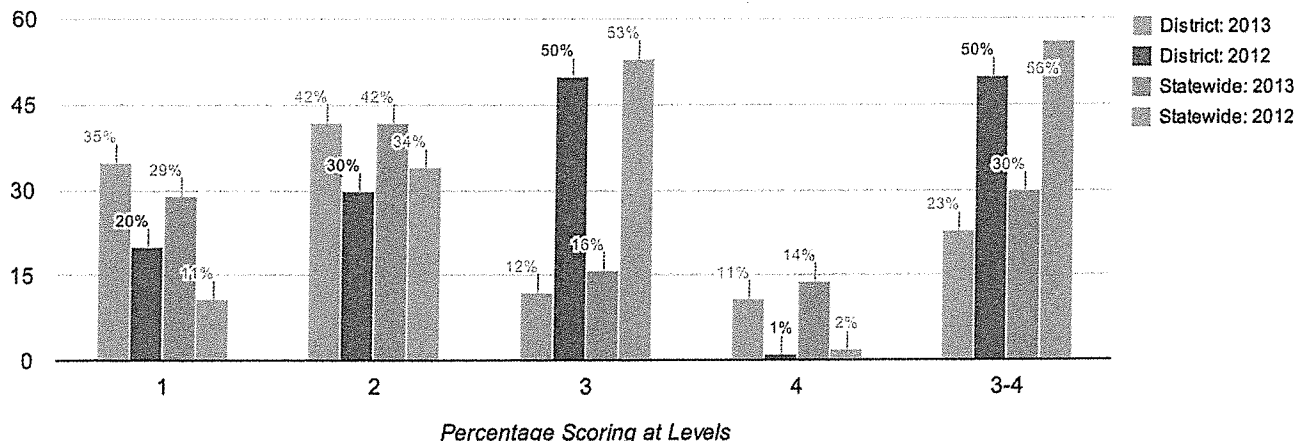
Results by Student Group

2013

2012

Total Tested	Percent Scoring at Level(s)				% Proficient (Levels 3 and 4)	Total Tested	Percent Scoring at Level(s)				% Proficient (Levels 3 and 4)
	1	2	3	4			1	2	3	4	
136	43	35	18	3	21	151	14	34	51	1	52
115	35	40	22	3	25	127	4	35	60	2	61
21	90	10	0	0	0	24	67	29	4	0	4
3	—	—	—	—	—	1	—	—	—	—	—
2	—	—	—	—	—	5	—	—	—	—	—
1	—	—	—	—	—	2	—	—	—	—	—
129	43	36	18	3	21	142	13	33	52	1	54
1	—	—	—	—	—	1	—	—	—	—	—
7	57	14	29	0	29	9	22	44	33	0	33
67	40	34	22	3	25	73	15	30	52	3	55
69	46	36	14	3	17	78	13	37	50	0	50
135	—	—	—	—	—	151	14	34	51	1	52
1	—	—	—	—	—	0	0	0	0	0	0
63	57	30	13	0	13	70	23	46	31	0	31
73	32	40	23	5	29	81	6	23	68	2	70
136	43	35	18	3	21	151	14	34	51	1	52

Grade 6 English Language Arts



Mean Score

Percentage Scoring at Levels

2013

2012

294

658

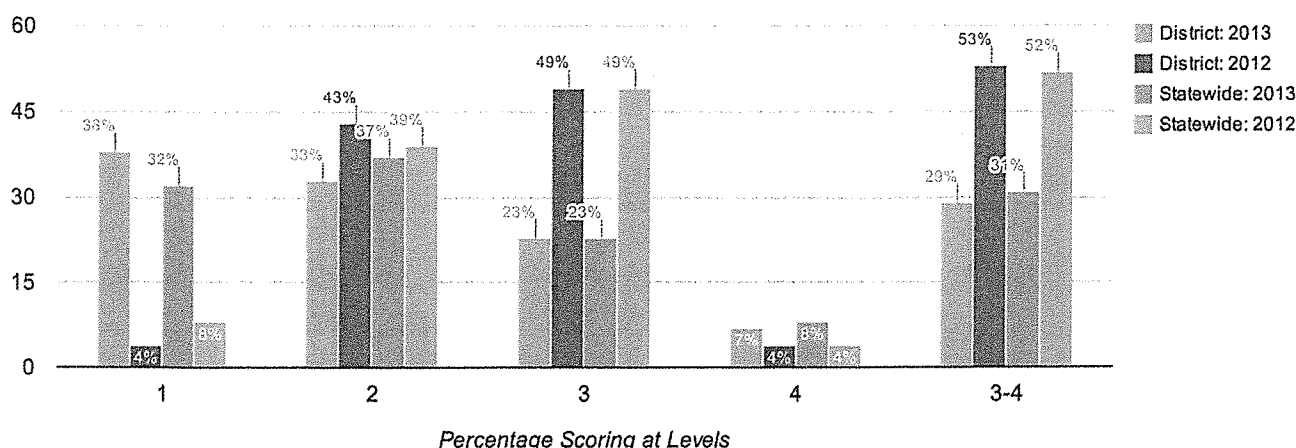
Results by Student Group

2013

2012

	Total Tested	Percent Scoring at Level(s)				% Proficient (Levels 3 and 4)	Total Tested	Percent Scoring at Level(s)				% Proficient (Levels 3 and 4)
		1	2	3	4			1	2	3	4	
All Students	141	35	42	12	11	23	167	20	30	50	1	50
General Education	121	26	48	14	12	26	134	10	28	61	1	62
Students with Disabilities	20	95	5	0	0	0	33	61	36	3	0	3
Asian or Native Hawaiian/Other Pacific Islander	1	—	—	—	—	—	1	—	—	—	—	—
Black or African American	8	—	—	—	—	—	4	—	—	—	—	—
Hispanic or Latino	1	—	—	—	—	—	4	—	—	—	—	—
White	129	35	42	12	11	23	158	20	30	50	1	51
Multiracial	2	—	—	—	—	—	0	0	0	0	0	0
Small Group Total	12	42	42	8	8	17	9	22	33	44	0	44
Female	65	35	37	14	14	28	80	18	28	54	1	55
Male	76	36	46	11	8	18	87	22	32	46	0	46
English Proficient	139	—	—	—	—	—	167	20	30	50	1	50
Limited English Proficient	2	—	—	—	—	—	0	0	0	0	0	0
Economically Disadvantaged	63	56	40	3	2	5	73	34	47	19	0	19
Not Economically Disadvantaged	78	19	44	19	18	37	94	9	17	73	1	74
Not Migrant	141	35	42	12	11	23	167	20	30	50	1	50

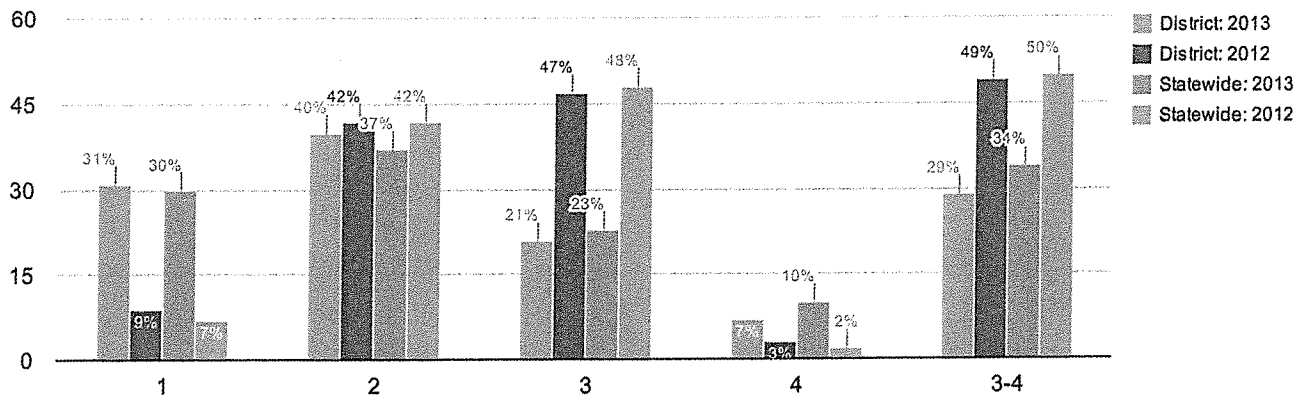
Grade 7 English Language Arts



Mean Score

	2013						2012					
	292						667					
Results by Student Group	2013						2012					
	Total Tested	Percent Scoring at Level(s)				% Proficient (Levels 3 and 4)	Total Tested	Percent Scoring at Level(s)				% Proficient (Levels 3 and 4)
		1	2	3	4			1	2	3	4	
All Students	153	38	33	23	7	29	162	4	43	49	4	53
General Education	128	27	38	27	8	35	140	1	39	56	4	60
Students with Disabilities	25	92	8	0	0	0	22	27	64	9	0	9
American Indian or Alaska Native	0	0	0	0	0	0	1	—	—	—	—	—
Asian or Native Hawaiian/Other Pacific Islander	1	—	—	—	—	—	1	—	—	—	—	—
Black or African American	3	—	—	—	—	—	4	—	—	—	—	—
Hispanic or Latino	4	—	—	—	—	—	4	—	—	—	—	—
White	145	37	32	24	6	30	151	4	42	50	4	54
Multiracial	0	0	0	0	0	0	1	—	—	—	—	—
Small Group Total	8	50	38	0	13	13	11	9	45	45	0	45
Female	77	31	38	23	8	31	75	4	35	56	5	61
Male	76	45	28	22	5	28	87	5	49	44	2	46
English Proficient	153	38	33	23	7	29	162	4	43	49	4	53
Economically Disadvantaged	66	65	24	11	0	11	56	11	54	36	0	36
Not Economically Disadvantaged	87	17	39	32	11	44	106	1	37	57	6	62
Not Migrant	153	38	33	23	7	29	162	4	43	49	4	53

Grade 8 English Language Arts



Mean Score

Percentage Scoring at Levels

2013

2012

298

655

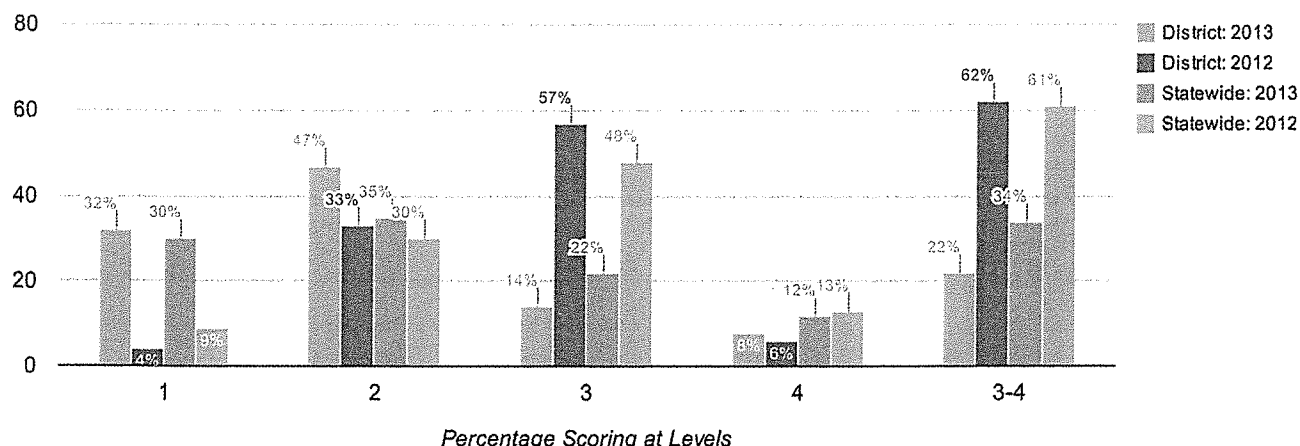
Results by Student Group

2013

2012

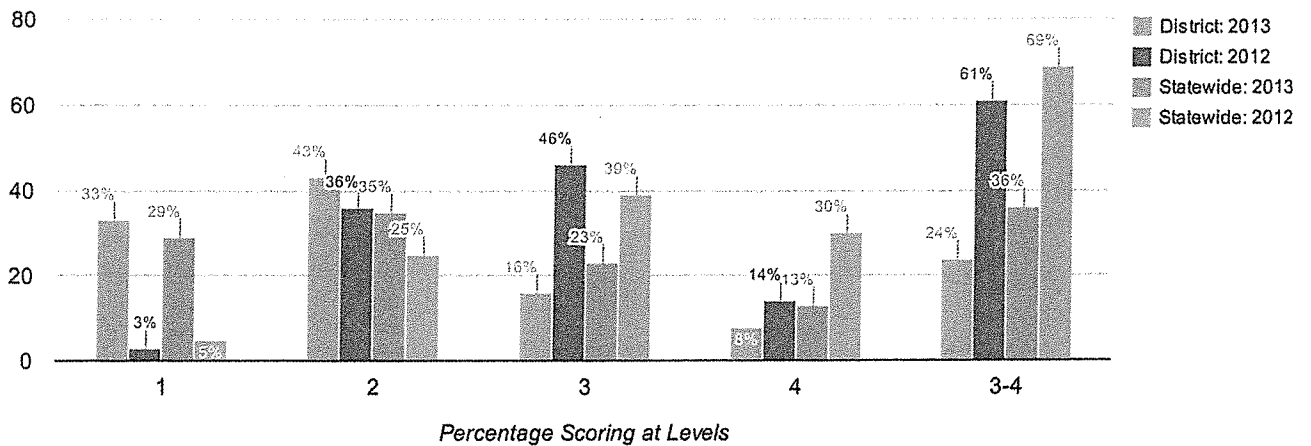
	Total Tested	Percent Scoring at Level(s)				% Proficient (Levels 3 and 4)	Total Tested	Percent Scoring at Level(s)				% Proficient (Levels 3 and 4)
		1	2	3	4			1	2	3	4	
All Students	154	31	40	21	7	29	154	9	42	47	3	49
General Education	131	24	45	23	8	31	123	2	38	56	3	59
Students with Disabilities	23	74	13	13	0	13	31	35	55	10	0	10
American Indian or Alaska Native	1	—	—	—	—	—	1	—	—	—	—	—
Asian or Native Hawaiian/Other Pacific Islander	1	—	—	—	—	—	1	—	—	—	—	—
Black or African American	3	—	—	—	—	—	6	0	50	50	0	50
Hispanic or Latino	4	—	—	—	—	—	2	—	—	—	—	—
White	144	32	41	21	6	27	143	10	40	48	3	50
Multiracial	1	—	—	—	—	—	1	—	—	—	—	—
Small Group Total	10	20	30	30	20	50	5	0	80	20	0	20
Female	71	25	41	24	10	34	62	0	40	55	5	60
Male	83	36	40	19	5	24	92	15	42	41	1	42
English Proficient	154	31	40	21	7	29	154	9	42	47	3	49
Economically Disadvantaged	62	44	40	13	3	16	64	14	55	31	0	31
Not Economically Disadvantaged	92	23	40	27	10	37	90	6	32	58	4	62
Not Migrant	154	31	40	21	7	29	154	9	42	47	3	49

Grade 3 Mathematics



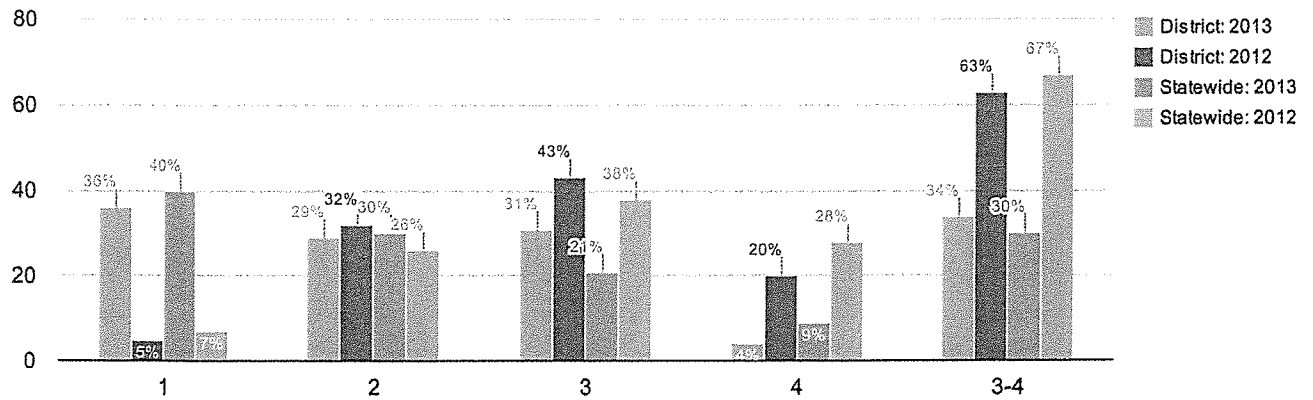
Results by Student Group	2013						2012					
	Total Tested	Percent Scoring at Level(s)				% Proficient (Levels 3 and 4)	Total Tested	Percent Scoring at Level(s)				% Proficient (Levels 3 and 4)
		1	2	3	4			1	2	3	4	
All Students	130	32	47	14	8	22	138	4	33	57	6	62
General Education	114	26	49	16	9	25	120	3	31	60	7	67
Students with Disabilities	16	69	31	0	0	0	18	17	50	33	0	33
Asian or Native Hawaiian/Other Pacific Islander	0	0	0	0	0	0	3	—	—	—	—	—
Black or African American	5	—	—	—	—	—	2	—	—	—	—	—
Hispanic or Latino	1	—	—	—	—	—	1	—	—	—	—	—
White	123	32	46	14	8	22	131	5	34	55	6	61
Multiracial	1	—	—	—	—	—	1	—	—	—	—	—
Small Group Total	7	29	57	14	0	14	7	0	14	86	0	86
Female	70	33	47	14	6	20	63	8	33	56	3	59
Male	60	30	47	13	10	23	75	1	33	57	8	65
English Proficient	130	32	47	14	8	22	138	4	33	57	6	62
Economically Disadvantaged	61	46	43	7	5	11	53	9	40	49	2	51
Not Economically Disadvantaged	69	19	51	20	10	30	85	1	29	61	8	69
Migrant	1	—	—	—	—	—	0	0	0	0	0	0
Not Migrant	129	—	—	—	—	—	138	4	33	57	6	62

Mean Score



	2013						2012					
	292						682					
Results by Student Group	2013						2012					
	Total Tested	Percent Scoring at Level(s)				% Proficient (Levels 3 and 4)	Total Tested	Percent Scoring at Level(s)				% Proficient (Levels 3 and 4)
		1	2	3	4			1	2	3	4	
All Students	129	33	43	16	8	24	140	3	36	46	14	61
General Education	106	20	52	20	8	28	121	0	34	50	17	66
Students with Disabilities	23	91	4	0	4	4	19	21	53	26	0	26
Asian or Native Hawaiian/Other Pacific Islander	2	—	—	—	—	—	3	—	—	—	—	—
Black or African American	3	—	—	—	—	—	1	—	—	—	—	—
Hispanic or Latino	1	—	—	—	—	—	0	0	0	0	0	0
White	122	34	43	16	7	23	135	3	36	47	15	61
Multiracial	1	—	—	—	—	—	1	—	—	—	—	—
Small Group Total	7	14	43	14	29	43	5	0	60	40	0	40
Female	56	34	50	13	4	16	74	1	39	42	18	59
Male	73	32	38	19	11	30	66	5	33	52	11	62
English Proficient	129	33	43	16	8	24	139	—	—	—	—	—
Limited English Proficient	0	0	0	0	0	0	1	—	—	—	—	—
Economically Disadvantaged	53	49	45	6	0	6	61	5	48	38	10	48
Not Economically Disadvantaged	76	21	42	24	13	37	79	1	28	53	18	71
Migrant	0	0	0	0	0	0	1	—	—	—	—	—
Not Migrant	129	33	43	16	8	24	139	—	—	—	—	—

Grade 5 Mathematics



Mean Score

Percentage Scoring at Levels

2013

2012

301

683

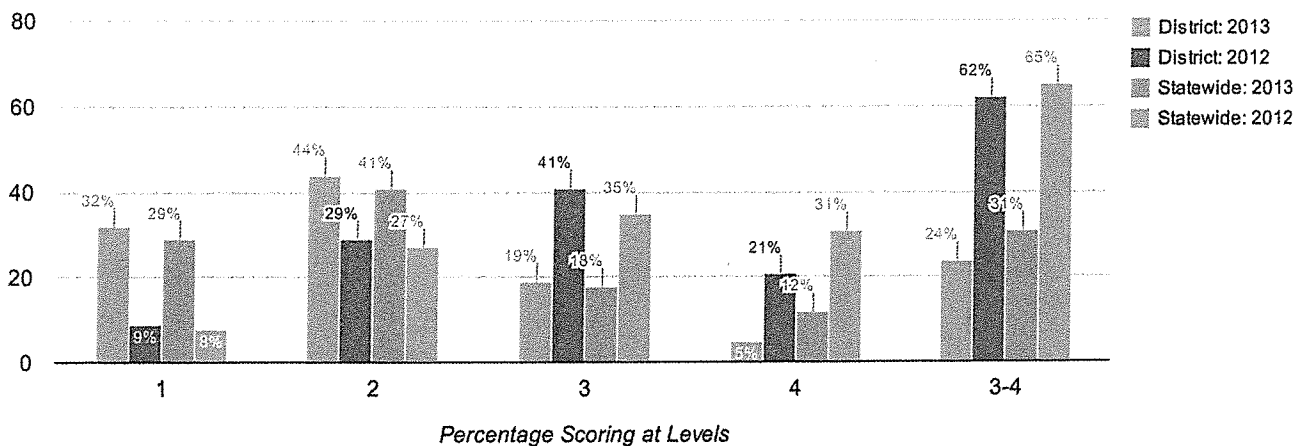
Results by Student Group

2013

2012

	Total Tested	Percent Scoring at Level(s)				% Proficient (Levels 3 and 4)	Total Tested	Percent Scoring at Level(s)				% Proficient (Levels 3 and 4)
		1	2	3	4			1	2	3	4	
All Students	137	36	29	31	4	34	153	5	32	43	20	63
General Education	116	28	33	34	4	39	129	1	25	51	23	74
Students with Disabilities	21	81	10	10	0	10	24	25	71	0	4	4
Asian or Native Hawaiian/Other Pacific Islander	3	—	—	—	—	—	1	—	—	—	—	—
Black or African American	2	—	—	—	—	—	7	—	—	—	—	—
Hispanic or Latino	1	—	—	—	—	—	2	—	—	—	—	—
White	130	35	31	31	4	35	142	5	31	44	20	64
Multiracial	1	—	—	—	—	—	1	—	—	—	—	—
Small Group Total	7	71	0	29	0	29	11	0	45	36	18	55
Female	68	38	25	34	3	37	73	8	26	48	18	66
Male	69	35	33	28	4	32	80	1	38	39	23	61
English Proficient	136	—	—	—	—	—	151	—	—	—	—	—
Limited English Proficient	1	—	—	—	—	—	2	—	—	—	—	—
Economically Disadvantaged	65	49	32	15	3	18	72	7	53	29	11	40
Not Economically Disadvantaged	72	25	26	44	4	49	81	2	14	56	28	84
Not Migrant	137	36	29	31	4	34	153	5	32	43	20	63

Grade 6 Mathematics



2013

2012

295

676

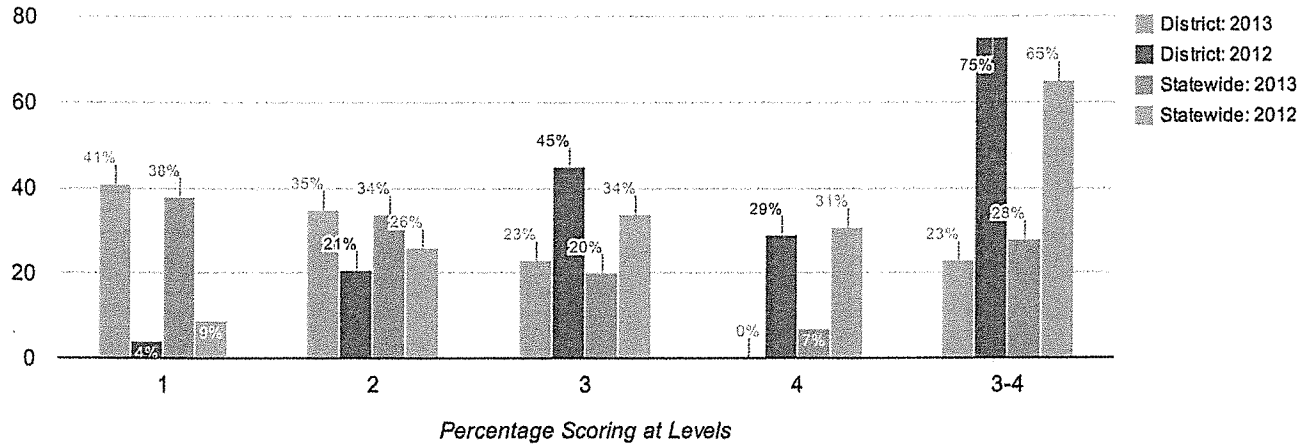
Results by Student Group

2013

2012

	Total Tested	Percent Scoring at Level(s)					% Proficient (Levels 3 and 4)	Total Tested	Percent Scoring at Level(s)					% Proficient (Levels 3 and 4)
		1	2	3	4				1	2	3	4		
All Students	137	32	44	19	5	24		169	9	29	41	21	62	
General Education	116	21	52	22	5	28		136	1	26	47	26	73	
Students with Disabilities	21	95	0	0	5	5		33	42	39	18	0	18	
Asian or Native Hawaiian/Other Pacific Islander	1	—	—	—	—	—		1	—	—	—	—	—	
Black or African American	7	—	—	—	—	—		4	—	—	—	—	—	
Hispanic or Latino	1	—	—	—	—	—		4	—	—	—	—	—	
White	126	32	44	20	5	25		160	9	28	41	22	63	
Multiracial	2	—	—	—	—	—		0	0	0	0	0	0	
Small Group Total	11	36	45	9	9	18		9	0	44	56	0	56	
Female	63	24	49	25	2	27		80	3	38	40	20	60	
Male	74	39	39	14	8	22		89	15	21	43	21	64	
English Proficient	135	—	—	—	—	—		169	9	29	41	21	62	
Limited English Proficient	2	—	—	—	—	—		0	0	0	0	0	0	
Economically Disadvantaged	63	52	43	3	2	5		74	15	49	27	9	36	
Not Economically Disadvantaged	74	15	45	32	8	41		95	4	14	53	29	82	
Not Migrant	137	32	44	19	5	24		169	9	29	41	21	62	

Grade 7 Mathematics



2013

2012

293

683

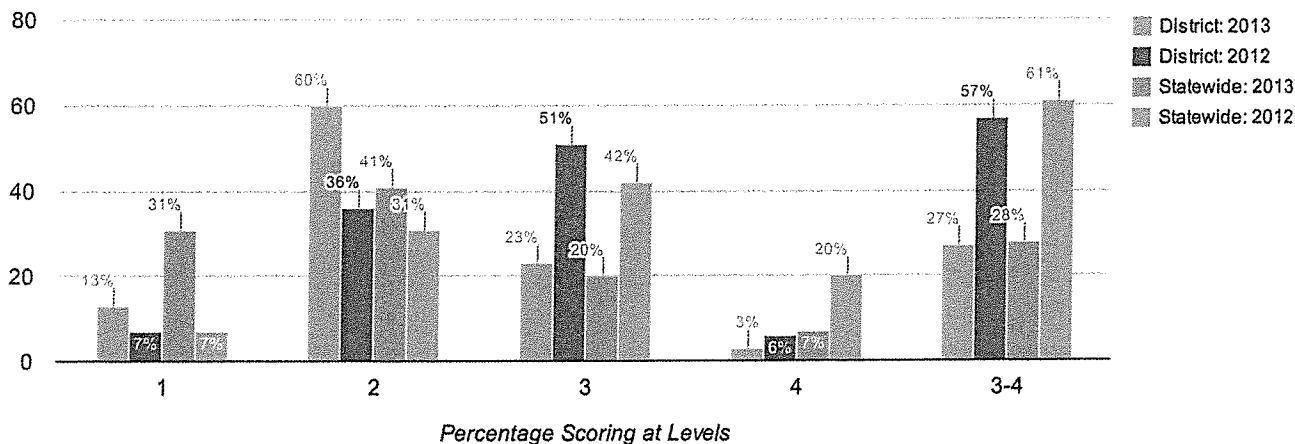
Results by Student Group

2013

2012

	Total Tested	Percent Scoring at Level(s)				% Proficient (Levels 3 and 4)	Total Tested	Percent Scoring at Level(s)				% Proficient (Levels 3 and 4)
		1	2	3	4			1	2	3	4	
All Students	150	41	35	23	0	23	163	4	21	45	29	75
General Education	126	33	40	27	0	27	141	0	19	48	33	81
Students with Disabilities	24	88	8	4	0	4	22	27	36	27	9	36
American Indian or Alaska Native	0	0	0	0	0	0	1	—	—	—	—	—
Asian or Native Hawaiian/Other Pacific Islander	1	—	—	—	—	—	1	—	—	—	—	—
Black or African American	3	—	—	—	—	—	4	—	—	—	—	—
Hispanic or Latino	4	—	—	—	—	—	4	—	—	—	—	—
White	142	39	36	25	0	25	152	3	22	47	28	75
Multiracial	0	0	0	0	0	0	1	—	—	—	—	—
Small Group Total	8	75	25	0	0	0	11	9	18	27	45	73
Female	74	41	41	19	0	19	76	4	24	39	33	72
Male	76	42	30	28	0	28	87	3	20	51	26	77
English Proficient	150	41	35	23	0	23	163	4	21	45	29	75
Economically Disadvantaged	63	75	16	10	0	10	57	11	33	42	14	56
Not Economically Disadvantaged	87	17	49	33	0	33	106	0	15	47	38	85
Not Migrant	150	41	35	23	0	23	163	4	21	45	29	75

Grade 8 Mathematics



2013

2012

307

673

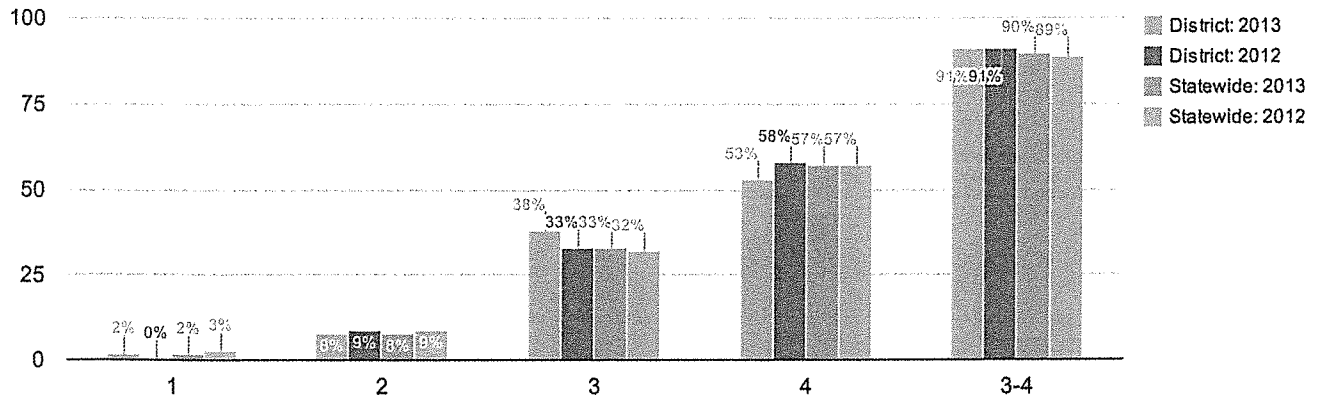
Results by Student Group

2013

2012

	Total Tested	Percent Scoring at Level(s)				% Proficient (Levels 3 and 4)	Total Tested	Percent Scoring at Level(s)				% Proficient (Levels 3 and 4)
		1	2	3	4			1	2	3	4	
All Students	154	13	60	23	3	27	155	7	36	51	6	57
General Education	131	10	61	25	4	29	124	1	32	60	7	67
Students with Disabilities	23	30	57	13	0	13	31	32	52	16	0	16
American Indian or Alaska Native	1	—	—	—	—	—	1	—	—	—	—	—
Asian or Native Hawaiian/Other Pacific Islander	1	—	—	—	—	—	1	—	—	—	—	—
Black or African American	3	—	—	—	—	—	6	0	17	67	17	83
Hispanic or Latino	4	—	—	—	—	—	2	—	—	—	—	—
White	144	14	62	21	3	24	144	8	38	49	6	54
Multiracial	1	—	—	—	—	—	1	—	—	—	—	—
Small Group Total	10	0	40	60	0	60	5	0	0	100	0	100
Female	69	9	62	23	6	29	63	0	38	57	5	62
Male	85	16	59	24	1	25	92	12	35	47	7	53
English Proficient	154	13	60	23	3	27	155	7	36	51	6	57
Economically Disadvantaged	60	23	57	18	2	20	65	12	42	45	2	46
Not Economically Disadvantaged	94	6	63	27	4	31	90	3	32	56	9	64
Not Migrant	154	13	60	23	3	27	155	7	36	51	6	57

Grade 4 Science



Mean Score

Percentage Scoring at Levels

2013

2012

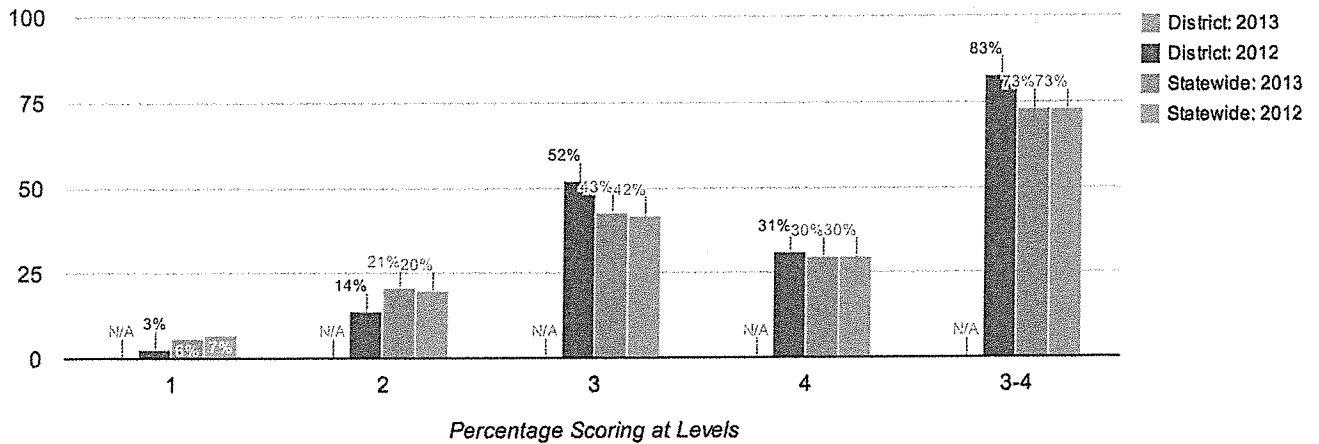
82

83

Results by Student Group	2013						2012					
	Total Tested	Percent Scoring at Level(s)				% Proficient (Levels 3 and 4)	Total Tested	Percent Scoring at Level(s)				% Proficient (Levels 3 and 4)
		1	2	3	4			1	2	3	4	
All Students	132	2	8	38	53	91	138	0	9	33	58	91
General Education	110	2	5	33	61	94	119	0	6	29	65	94
Students with Disabilities	22	0	23	64	14	77	19	0	26	58	16	74
Asian or Native Hawaiian/Other Pacific Islander	2	—	—	—	—	—	3	—	—	—	—	—
Black or African American	3	—	—	—	—	—	1	—	—	—	—	—
Hispanic or Latino	1	—	—	—	—	—	0	0	0	0	0	0
White	125	2	7	38	54	91	133	0	8	33	59	92
Multiracial	1	—	—	—	—	—	1	—	—	—	—	—
Small Group Total	7	0	14	43	43	86	5	0	40	40	20	60
Female	59	2	7	36	56	92	72	0	11	31	58	89
Male	73	1	8	40	51	90	66	0	6	36	58	94
English Proficient	132	2	8	38	53	91	137	—	—	—	—	—
Limited English Proficient	0	0	0	0	0	0	1	—	—	—	—	—
Economically Disadvantaged	54	4	7	54	35	89	60	0	13	35	52	87
Not Economically Disadvantaged	78	0	8	27	65	92	78	0	5	32	63	95
Migrant	0	0	0	0	0	0	1	—	—	—	—	—
Not Migrant	132	2	8	38	53	91	137	—	—	—	—	—

Grade 8 Science

Data in the bar charts include those for grade 8 students who took the New York State Grade 8 Science Test and grade 8 students who took a Regents science test in lieu of this test. Mean scores and data in the table for grade 8 science include only those for grade 8 students who took the New York State Grade 8 Science Test.



Mean Score

2013

2012

77

76

Results by Student Group

2013

2012

	Total Tested	Percent Scoring at Level(s)				% Proficient (Levels 3 and 4)	Total Tested	Percent Scoring at Level(s)				% Proficient (Levels 3 and 4)
		1	2	3	4			1	2	3	4	
All Students	164	2	13	54	30	85	148	3	14	52	31	83
General Education	141	1	8	57	34	91	121	1	7	56	36	93
Students with Disabilities	23	13	43	35	9	43	27	15	44	33	7	41
American Indian or Alaska Native	1	—	—	—	—	—	1	—	—	—	—	—
Asian or Native Hawaiian/Other Pacific Islander	1	—	—	—	—	—	1	—	—	—	—	—
Black or African American	3	—	—	—	—	—	6	0	0	67	33	100
Hispanic or Latino	3	—	—	—	—	—	2	—	—	—	—	—
White	154	3	12	56	29	85	137	4	15	50	31	82
Multiracial	2	—	—	—	—	—	1	—	—	—	—	—
Small Group Total	10	0	20	30	50	80	5	0	0	80	20	100
Female	73	1	14	53	32	85	61	2	11	54	33	87
Male	91	3	12	55	30	85	87	5	15	51	30	80
English Proficient	164	2	13	54	30	85	148	3	14	52	31	83
Economically Disadvantaged	65	6	23	52	18	71	60	5	17	60	18	78
Not Economically Disadvantaged	99	0	6	56	38	94	88	2	11	47	40	86
Not Migrant	164	2	13	54	30	85	148	3	14	52	31	83

Grade 8 Students Taking a Regents Science Test

Accelerated grade 8 students who take a Regents science test in lieu of the New York State Grade 8 Science Test.

Results by Student Group

Results by Student Group	2013						2012					
	Total Tested	Percent Scoring at Level(s)				% Proficient (Levels 3 and 4)	Total Tested	Percent Scoring at Level(s)				% Proficient (Levels 3 and 4)
		1	2	3	4			1	2	3	4	
All Students	1	—	—	—	—	—	0	0	0	0	0	0

NAEP Grade 4 Reading

	% Below Basic	% Basic	% Proficient	% Advanced
All Students	30	33	28	9
American Indian or Alaska Native	*	*	*	*
Asian or Native Hawaiian/Other Pacific Islander	19	27	36	18
Black or African American	45	34	18	3
Hispanic or Latino	44	35	17	4
White	20	33	35	12
Multiracial	*	*	*	*
Students with Disabilities	69	22	7	2
Limited English Proficient	75	21	4	*
Economically Disadvantaged	43	34	19	4

NAEP Grade 4 Mathematics

	% Below Basic	% Basic	% Proficient	% Advanced
All Students	18	42	33	7
American Indian or Alaska Native	*	*	*	*
Asian or Native Hawaiian/Other Pacific Islander	6	25	48	21
Black or African American	33	50	16	1
Hispanic or Latino	27	49	22	2
White	9	41	42	8
Multiracial	*	*	*	*
Students with Disabilities	43	42	14	1
Limited English Proficient	54	36	10	*
Economically Disadvantaged	26	48	23	3

*Reporting standards not met.

Statewide Results on the National Assessment of Educational Progress: NAEP (2012 - 13)

NAEP Grade 8 Reading

	% Below Basic	% Basic	% Proficient	% Advanced
All Students	24	41	30	5
American Indian or Alaska Native	*	*	*	*
Asian or Native Hawaiian/Other Pacific Islander	17	33	38	12
Black or African American	37	45	17	1
Hispanic or Latino	36	45	18	1
White	14	40	40	6
Multiracial	*	*	*	*
Students with Disabilities	56	36	8	*
Limited English Proficient	80	19	1	*
Economically Disadvantaged	35	44	20	1

NAEP Grade 8 Mathematics

	% Below Basic	% Basic	% Proficient	% Advanced
All Students	28	40	24	8
American Indian or Alaska Native	*	*	*	*
Asian or Native Hawaiian/Other Pacific Islander	14	27	33	26
Black or African American	50	38	11	1
Hispanic or Latino	44	42	12	2
White	15	41	34	10
Multiracial	*	*	*	*
Students with Disabilities	66	27	6	1
Limited English Proficient	75	21	3	1
Economically Disadvantaged	42	39	15	4

*Reporting standards not met.

Statewide Results on the National Assessment of Educational Progress: NAEP (2012 - 13)

NAEP Participation Rates

Grade 4 Reading

Participation Rate

Students with Disabilities

94

Limited English Proficient

93

Grade 4 Mathematics

Participation Rate

Students with Disabilities

94

Limited English Proficient

93

Grade 8 Reading

Participation Rate

Students with Disabilities

97

Limited English Proficient

91

Grade 8 Mathematics

Participation Rate

Students with Disabilities

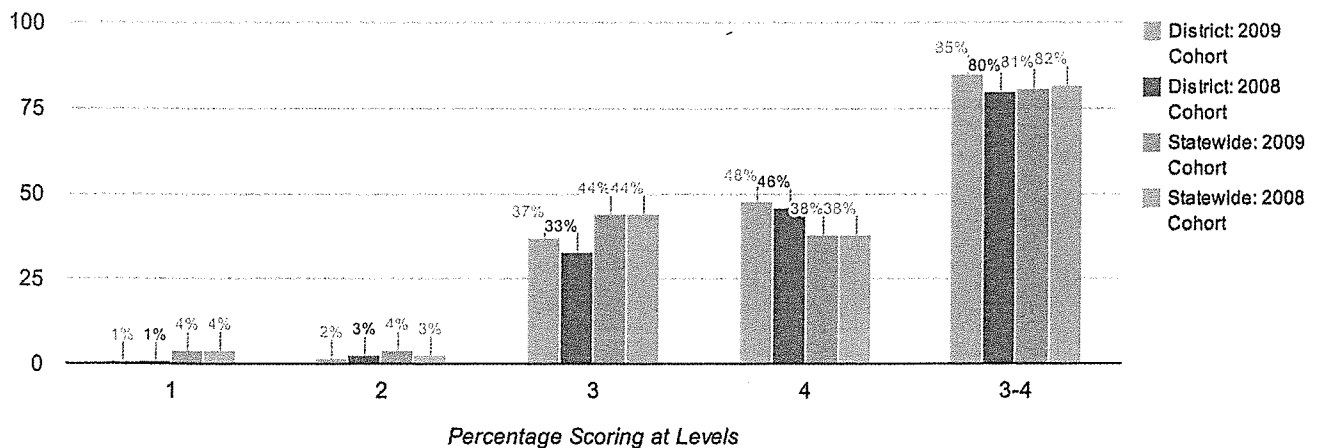
89

Limited English Proficient

94

Total Cohort Results in Secondary-Level English Language Arts after Four Years of Instruction

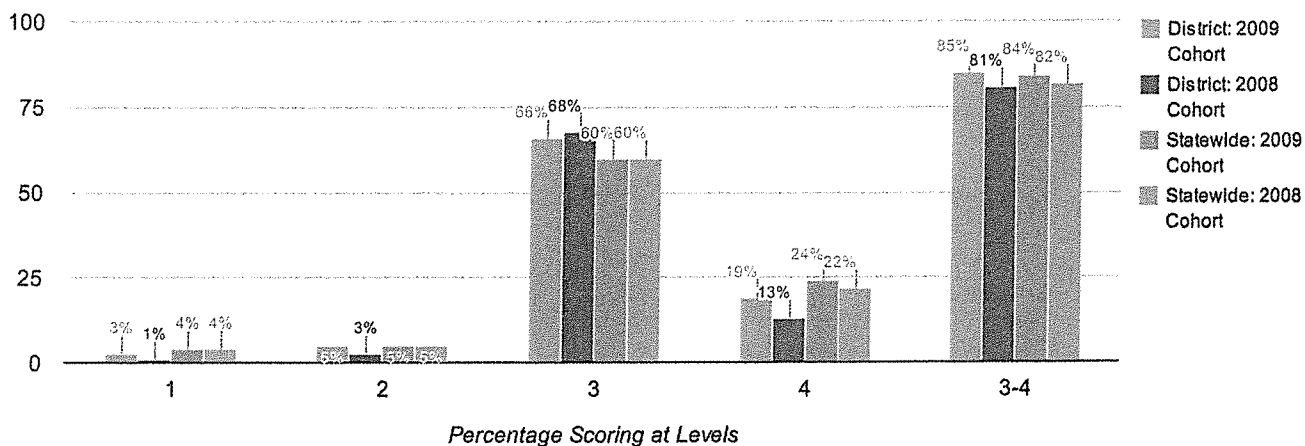
Total cohort results are those for New York State Regents examinations only.



Results by Student Group	2009 Cohort						2008 Cohort					
	Number of Students	Percent Scoring at Level(s)				% Proficient (Levels 3 and 4)	Number of Students	Percent Scoring at Level(s)				% Proficient (Levels 3 and 4)
		1	2	3	4			1	2	3	4	
All Students	175	1	2	37	48	85	177	1	3	33	46	80
General Education	144	0	0	35	58	94	143	1	1	33	56	89
Students with Disabilities	31	6	10	45	0	45	34	3	15	35	6	41
Asian or Native Hawaiian/Other Pacific Islander	3	—	—	—	—	—	1	—	—	—	—	—
Black or African American	6	—	—	—	—	—	5	—	—	—	—	—
Hispanic or Latino	1	—	—	—	—	—	2	—	—	—	—	—
White	165	1	2	36	50	85	169	1	4	32	47	79
Small Group Total	10	0	0	60	20	80	8	0	0	63	25	88
Female	93	1	0	33	53	86	81	0	2	26	58	84
Male	82	1	4	41	43	84	96	2	4	40	36	76
English Proficient	175	1	2	37	48	85	177	1	3	33	46	80
Economically Disadvantaged	59	3	3	47	24	71	57	4	7	40	25	65
Not Economically Disadvantaged	116	0	1	32	60	92	120	0	2	30	57	87
Not Migrant	175	1	2	37	48	85	177	1	3	33	46	80

Total Cohort Results in Secondary-Level Mathematics after Four Years of Instruction

Total cohort results are those for New York State Regents examinations only.



Results by Student Group

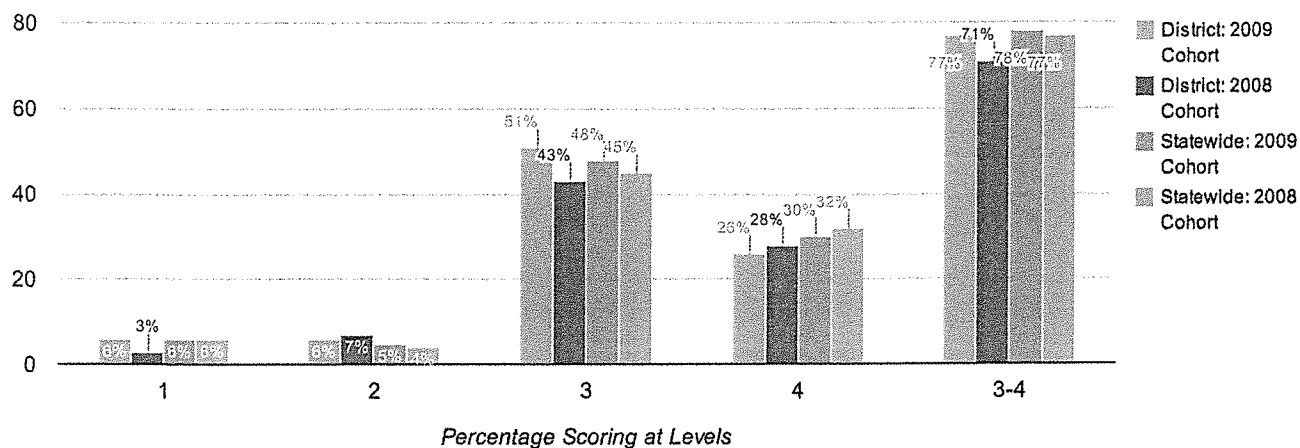
2009 Cohort

2008 Cohort

	Number of Students	Percent Scoring at Level(s)				% Proficient (Levels 3 and 4)	Number of Students	Percent Scoring at Level(s)				% Proficient (Levels 3 and 4)
		1	2	3	4			1	2	3	4	
All Students	175	3	5	66	19	85	177	1	3	68	13	81
General Education	144	0	1	73	23	96	143	0	1	73	16	90
Students with Disabilities	31	16	19	32	0	32	34	6	9	44	0	44
Asian or Native Hawaiian/Other Pacific Islander	3	—	—	—	—	—	1	—	—	—	—	—
Black or African American	6	—	—	—	—	—	5	—	—	—	—	—
Hispanic or Latino	1	—	—	—	—	—	2	—	—	—	—	—
White	165	3	4	66	19	85	169	1	3	68	12	80
Small Group Total	10	0	10	60	20	80	8	0	0	63	25	88
Female	93	2	5	66	19	85	81	1	2	67	17	84
Male	82	4	4	66	18	84	96	1	3	69	9	78
English Proficient	175	3	5	66	19	85	177	1	3	68	13	81
Economically Disadvantaged	59	7	7	71	3	75	57	2	5	67	4	70
Not Economically Disadvantaged	116	1	3	63	27	90	120	1	2	68	18	86
Not Migrant	175	3	5	66	19	85	177	1	3	68	13	81

Total Cohort Results in Secondary-Level Global History and Geography after Four Years of Instruction

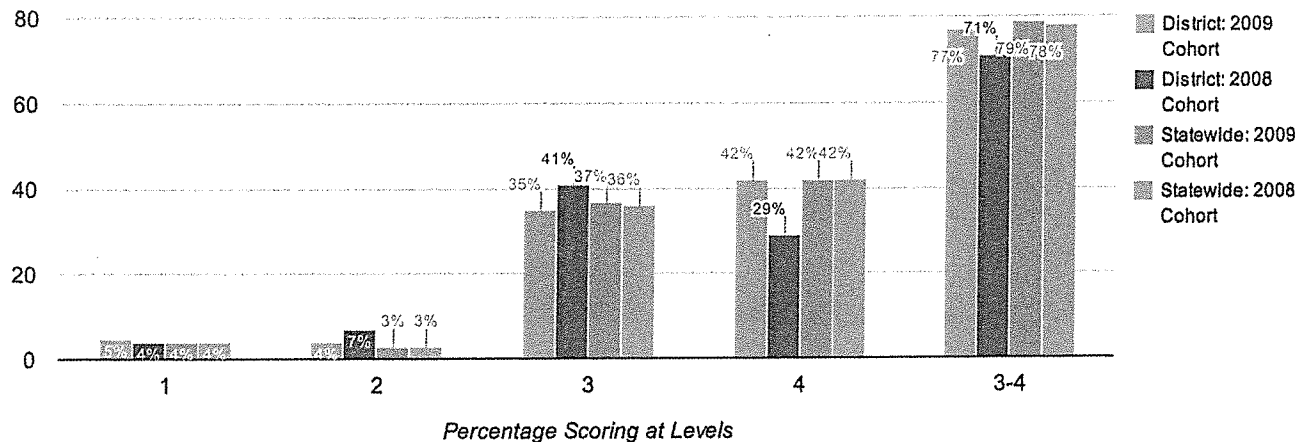
Total cohort results are those for New York State Regents examinations only.



Results by Student Group	2009 Cohort						2008 Cohort					
	Number of Students	Percent Scoring at Level(s)				% Proficient (Levels 3 and 4)	Number of Students	Percent Scoring at Level(s)				% Proficient (Levels 3 and 4)
		1	2	3	4			1	2	3	4	
All Students	175	6	6	51	26	77	177	3	7	43	28	71
General Education	144	1	3	58	32	90	143	1	4	48	35	83
Students with Disabilities	31	29	16	19	0	19	34	15	18	21	0	21
Asian or Native Hawaiian/Other Pacific Islander	3	—	—	—	—	—	1	—	—	—	—	—
Black or African American	6	—	—	—	—	—	5	—	—	—	—	—
Hispanic or Latino	1	—	—	—	—	—	2	—	—	—	—	—
White	165	5	6	52	25	77	169	4	7	43	28	71
Small Group Total	10	10	0	40	40	80	8	0	13	38	38	75
Female	93	4	6	49	27	76	81	1	2	51	28	79
Male	82	7	5	52	26	78	96	5	10	36	28	65
English Proficient	175	6	6	51	26	77	177	3	7	43	28	71
Economically Disadvantaged	59	15	5	51	10	61	57	5	18	37	12	49
Not Economically Disadvantaged	116	1	6	51	34	85	120	3	2	46	36	82
Not Migrant	175	6	6	51	26	77	177	3	7	43	28	71

Total Cohort Results in Secondary-Level U.S. History and Government after Four Years of Instruction

Total cohort results are those for New York State Regents examinations only.



Results by Student Group

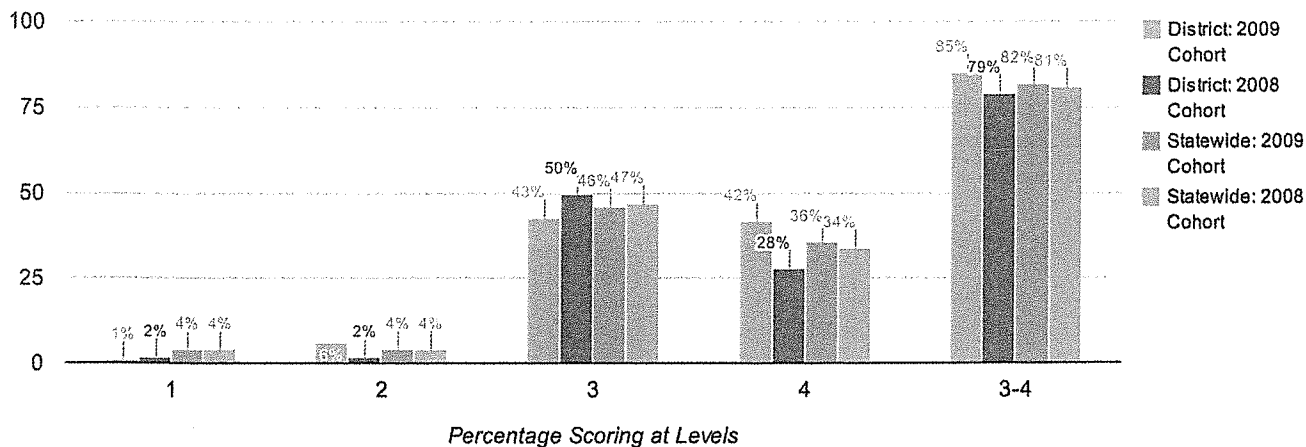
2009 Cohort

2008 Cohort

	Number of Students	Percent Scoring at Level(s)				% Proficient (Levels 3 and 4)	Number of Students	Percent Scoring at Level(s)				% Proficient (Levels 3 and 4)
		1	2	3	4			1	2	3	4	
All Students	175	5	4	35	42	77	177	4	7	41	29	71
General Education	144	0	2	39	51	90	143	1	4	46	36	82
Students with Disabilities	31	26	13	19	0	19	34	15	18	21	3	24
Asian or Native Hawaiian/Other Pacific Islander	3	—	—	—	—	—	1	—	—	—	—	—
Black or African American	6	—	—	—	—	—	5	—	—	—	—	—
Hispanic or Latino	1	—	—	—	—	—	2	—	—	—	—	—
White	165	5	4	36	42	78	169	4	7	42	29	71
Small Group Total	10	0	10	20	40	60	8	0	13	25	38	63
Female	93	2	4	42	37	78	81	2	4	48	31	79
Male	82	7	4	28	48	76	96	5	9	35	28	64
English Proficient	175	5	4	35	42	77	177	4	7	41	29	71
Economically Disadvantaged	59	10	5	37	20	58	57	7	18	32	12	44
Not Economically Disadvantaged	116	2	3	34	53	87	120	3	2	46	38	83
Not Migrant	175	5	4	35	42	77	177	4	7	41	29	71

Total Cohort Results in Secondary-Level Science after Four Years of Instruction

Total cohort results are those for New York State Regents examinations only.



Results by Student Group

2009 Cohort

2008 Cohort

	Number of Students	Percent Scoring at Level(s)				% Proficient (Levels 3 and 4)	Number of Students	Percent Scoring at Level(s)				% Proficient (Levels 3 and 4)
		1	2	3	4			1	2	3	4	
All Students	175	1	6	43	42	85	177	2	2	50	28	79
General Education	144	1	1	48	49	97	143	0	1	53	34	87
Students with Disabilities	31	3	29	19	10	29	34	12	6	38	3	41
Asian or Native Hawaiian/Other Pacific Islander	3	—	—	—	—	—	1	—	—	—	—	—
Black or African American	6	—	—	—	—	—	5	—	—	—	—	—
Hispanic or Latino	1	—	—	—	—	—	2	—	—	—	—	—
White	165	1	6	41	43	84	169	2	2	50	28	78
Small Group Total	10	0	0	70	20	90	8	0	0	63	25	88
Female	93	1	4	51	37	87	81	4	1	57	27	84
Male	82	1	7	34	48	82	96	1	3	45	29	74
English Proficient	175	1	6	43	42	85	177	2	2	50	28	79
Economically Disadvantaged	59	3	8	56	19	75	57	4	4	53	11	63
Not Economically Disadvantaged	116	0	4	36	53	90	120	2	2	49	37	86
Not Migrant	175	1	6	43	42	85	177	2	2	50	28	79

Regents Examination Results (2012 - 13)

Results by Student Group

Comprehensive English

Integrated Algebra

	Total Tested	Percent of students scoring at or above			Total Tested	Percent of students scoring at or above		
		55	65	85		55	65	85
All Students	153	97	87	42	201	92	81	13
General Education	130	99	94	49	165	98	93	16
Students with Disabilities	23	87	48	0	36	64	28	3
American Indian or Alaska Native	0	0	0	0	1	—	—	—
Asian or Native Hawaiian/Other Pacific Islander	3	—	—	—	2	—	—	—
Black or African American	2	—	—	—	7	100	86	29
Hispanic or Latino	1	—	—	—	7	86	86	43
White	147	97	88	41	182	92	80	12
Multiracial	0	0	0	0	2	—	—	—
Small Group Total	6	100	67	50	5	100	100	20
Female	72	97	89	53	98	94	81	17
Male	81	98	85	32	103	90	82	10
English Proficient	152	—	—	—	200	—	—	—
Limited English Proficient	1	—	—	—	1	—	—	—
Economically Disadvantaged	44	95	75	14	72	92	72	4
Not Economically Disadvantaged	109	98	92	53	129	92	86	19
Migrant	0	0	0	0	0	0	0	0
Not Migrant	153	97	87	42	201	92	81	13

Regents Examination Results (2012 - 13)

Results by Student Group	Geometry				Algebra 2/Trigonometry			
	Total Tested	Percent of students scoring at or above			Total Tested	Percent of students scoring at or above		
		55	65	85		55	65	85
All Students	124	91	78	13	97	79	68	34
General Education	118	92	80	14	96	—	—	—
Students with Disabilities	6	67	50	0	1	—	—	—
American Indian or Alaska Native	0	0	0	0	0	0	0	0
Asian or Native Hawaiian/Other Pacific Islander	2	—	—	—	4	—	—	—
Black or African American	5	—	—	—	1	—	—	—
Hispanic or Latino	0	0	0	0	2	—	—	—
White	117	91	79	12	90	78	67	33
Multiracial	0	0	0	0	0	0	0	0
Small Group Total	7	86	71	29	7	100	86	43
Female	66	91	77	12	50	80	62	28
Male	58	91	79	14	47	79	74	40
English Proficient	124	91	78	13	96	—	—	—
Limited English Proficient	0	0	0	0	1	—	—	—
Economically Disadvantaged	29	90	69	0	7	57	57	29
Not Economically Disadvantaged	95	92	81	17	90	81	69	34
Migrant	0	0	0	0	0	0	0	0
Not Migrant	124	91	78	13	97	79	68	34

U.S. History & Government

	Total Tested	Percent of students scoring at or above			Total Tested	Percent of students scoring at or above		
		55	65	85		55	65	85
All Students	204	82	70	28	162	86	78	46
General Education	171	92	78	33	134	92	86	53
Students with Disabilities	33	33	24	3	28	57	39	11
American Indian or Alaska Native	0	0	0	0	0	0	0	0
Asian or Native Hawaiian/Other Pacific Islander	4	—	—	—	4	—	—	—
Black or African American	5	80	60	20	2	—	—	—
Hispanic or Latino	2	—	—	—	1	—	—	—
White	193	82	69	29	155	86	78	47
Multiracial	0	0	0	0	0	0	0	0
Small Group Total	6	100	83	17	7	86	71	14
Female	104	85	70	29	80	83	75	38
Male	100	80	69	28	82	89	80	54
English Proficient	203	—	—	—	161	—	—	—
Limited English Proficient	1	—	—	—	1	—	—	—
Economically Disadvantaged	75	71	48	7	46	67	54	20
Not Economically Disadvantaged	129	89	82	41	116	93	87	56
Migrant	0	0	0	0	0	0	0	0
Not Migrant	204	82	70	28	162	86	78	46

Regents Examination Results (2012 - 13)

Results by Student Group

Living Environment

Physical Setting/Earth Science

	Total Tested	Percent of students scoring at or above			Total Tested	Percent of students scoring at or above		
		55	65	85		55	65	85
All Students	175	99	89	34	162	90	77	38
General Education	146	100	97	41	148	94	80	41
Students with Disabilities	29	93	52	0	14	50	36	7
American Indian or Alaska Native	0	0	0	0	1	—	—	—
Asian or Native Hawaiian/Other Pacific Islander	4	—	—	—	2	—	—	—
Black or African American	4	—	—	—	6	83	83	33
Hispanic or Latino	1	—	—	—	4	—	—	—
White	166	99	89	34	147	90	76	37
Multiracial	0	0	0	0	2	—	—	—
Small Group Total	9	100	100	33	9	100	89	56
Female	86	100	88	34	81	95	74	35
Male	89	98	90	35	81	85	79	42
English Proficient	175	99	89	34	162	90	77	38
Limited English Proficient	0	0	0	0	0	0	0	0
Economically Disadvantaged	59	98	85	8	50	80	56	24
Not Economically Disadvantaged	116	99	91	47	112	95	86	45
Migrant	0	0	0	0	0	0	0	0
Not Migrant	175	99	89	34	162	90	77	38

Regents Examination Results (2012 - 13)

Results by Student Group	Physical Setting/Chemistry				Physical Setting/Physics			
	Total Tested	Percent of students scoring at or above			Total Tested	Percent of students scoring at or above		
		55	65	85		55	65	85
All Students	80	91	79	23	41	98	73	29
General Education	80	91	79	23	41	98	73	29
Students with Disabilities	0	0	0	0	0	0	0	0
American Indian or Alaska Native	0	0	0	0	0	0	0	0
Asian or Native Hawaiian/Other Pacific Islander	2	—	—	—	1	—	—	—
Black or African American	1	—	—	—	1	—	—	—
Hispanic or Latino	1	—	—	—	1	—	—	—
White	76	—	—	—	38	—	—	—
Multiracial	0	0	0	0	0	0	0	0
Small Group Total	80	91	79	23	41	98	73	29
Female	47	89	79	19	24	96	67	21
Male	33	94	79	27	17	100	82	41
English Proficient	79	—	—	—	41	98	73	29
Limited English Proficient	1	—	—	—	0	0	0	0
Economically Disadvantaged	6	83	83	0	4	—	—	—
Not Economically Disadvantaged	74	92	78	24	37	—	—	—
Migrant	0	0	0	0	0	0	0	0
Not Migrant	80	91	79	23	41	98	73	29

Regents Competency Test Results (2012 - 13)

Results by Student Group	Reading		Writing		Math	
	Total Tested	Percent Passing	Total Tested	Percent Passing	Total Tested	Percent Passing
All Students	2	—	0	0	0	0
General Education	0	—	0	0	0	0
Students with Disabilities	2	—	0	0	0	0
American Indian or Alaska Native	0	0	0	0	0	0
Asian or Native Hawaiian/Other Pacific Islander	0	0	0	0	0	0
Black or African American	0	0	0	0	0	0
Hispanic or Latino	0	0	0	0	0	0
White	2	—	0	0	0	0
Multiracial	0	0	0	0	0	0
Small Group Total	2	—	0	0	0	0
Female	2	—	0	0	0	0
Male	0	—	0	0	0	0
English Proficient	2	—	0	0	0	0
Limited English Proficient	0	—	0	0	0	0
Economically Disadvantaged	2	—	0	0	0	0
Not Economically Disadvantaged	0	—	0	0	0	0
Migrant	0	—	0	0	0	0
Not Migrant	2	—	0	0	0	0

Regents Competency Test Results (2012 - 13)

Results by Student Group	Global Studies		U.S. History & Government		Science	
	Total Tested	Percent Passing	Total Tested	Percent Passing	Total Tested	Percent Passing
All Students	7	29	8	25	0	0
General Education	0	0	0	0	0	0
Students with Disabilities	7	29	8	25	0	0
American Indian or Alaska Native	0	0	0	0	0	0
Asian or Native Hawaiian/Other Pacific Islander	0	0	0	0	0	0
Black or African American	0	0	0	0	0	0
Hispanic or Latino	0	0	0	0	0	0
White	7	29	8	25	0	0
Multiracial	0	0	0	0	0	0
Small Group Total	0	0	0	0	0	0
Female	4	—	3	—	0	0
Male	3	—	5	—	0	0
English Proficient	7	29	8	25	0	0
Limited English Proficient	0	0	0	0	0	0
Economically Disadvantaged	5	—	6	—	0	0
Not Economically Disadvantaged	2	—	2	—	0	0
Migrant	0	0	0	0	0	0
Not Migrant	7	29	8	25	0	0

New York State Alternate Assessment (NYSAA) Results (2012 - 13)

Grade/Subject	Total Tested	Number Scoring at Level(s)				%Proficient (Levels 3 and 4)
		1	2	3	4	
Grade 3 ELA	3	—	—	—	—	—
Grade 3 Math	3	—	—	—	—	—
Grade 4 ELA	4	—	—	—	—	—
Grade 4 Math	4	—	—	—	—	—
Grade 4 Science	4	—	—	—	—	—
Grade 5 ELA	3	—	—	—	—	—
Grade 5 Math	3	—	—	—	—	—
Grade 6 ELA	2	—	—	—	—	—
Grade 6 Math	2	—	—	—	—	—
Grade 7 ELA	2	—	—	—	—	—
Grade 7 Math	2	—	—	—	—	—
Grade 8 ELA	3	—	—	—	—	—
Grade 8 Math	3	—	—	—	—	—
Grade 8 Science	3	—	—	—	—	—
Secondary-Level ELA	1	—	—	—	—	—
Secondary-Level Math	1	—	—	—	—	—

New York State English as a Second Language Achievement Test (NYSESLAT) Results (2012 - 13)

Grade 5	Total Tested	Percent of Students Scoring at Level(s)			
		Beginning	Intermediate	Advanced	Proficient
All Students	1	—	—	—	—
General Education	1	—	—	—	—

Grade 6	Total Tested	Percent of Students Scoring at Level(s)			
		Beginning	Intermediate	Advanced	Proficient
All Students	2	—	—	—	—
General Education	2	—	—	—	—

Grade 11	Total Tested	Percent of Students Scoring at Level(s)			
		Beginning	Intermediate	Advanced	Proficient
All Students	1	—	—	—	—
General Education	1	—	—	—	—

Elementary/Middle-Level English Language Arts Results for Accountability

All accountability groups made AYP: NO

Student Group	Made AYP	Tested 95%	Students Enrolled During the Test Administration Period	Percent of Enrolled Students with Valid Test Scores	PI >= EAMO or Safe Harbor Target	Tested Students Enrolled on BEDS Day	PI	EAMO	Safe Harbor Target
All Students	✓	✓	1,855*	96%*	✓	835	94	78	78
American Indian or Alaska Native	—	—	1	—	—	1	—	—	—
Black or African American	—	—	24	—	—	22	—	—	—
Hispanic or Latino	—	—	13	—	—	12	—	—	—
Asian or Native Hawaiian/Other Pacific Islander	—	—	8	—	—	8	—	—	—
White	X	✓	1,748*	96%*	X	786	94	101	100
Multiracial	—	—	7	—	—	6	—	—	—
Students With Disabilities	✓	✓	316*	95%*	✓	143†	37†	26	26
Limited English Proficient	—	—	3	—	—	3	—	—	—
Economically Disadvantaged	✓	✓	401	95%	✓	358	61	60	60

Results for the following groups are NOT used to determine AYP.

Student Group	Students Enrolled During the Test Administration Period	Percent of Enrolled Students with Valid Test Scores	Tested Students Enrolled on BEDS Day	PI
Not American Indian or Alaska Native	1,852*	96%*	834	94
Not Black or African American	1,807*	96%*	813	94
Not Hispanic or Latino	1,829*	96%*	823	94
Not Asian or Native Hawaiian/Other Pacific Islander	1,837*	96%*	827	93
Not White	53	96%	49	92
Not Multiracial	1,843*	96%*	829	94
General Education	1,539*	96%*	700	105
English Proficient	1,849*	96%*	832	94
Not Economically Disadvantaged	1,063*	96%*	477	118
Male	977*	96%*	432	88
Female	878*	96%*	403	100
Migrant	1	—	0	—
Not Migrant	1,852*	96%*	835	94

✓ Yes

X No

— There were fewer than 40 students enrolled during the test administration period, so the Percent of Enrolled Students with Valid Test Scores data are suppressed OR there were fewer than 30 tested students enrolled on BEDS day and during the test administration period, so the PI, EAMO, and Safe Harbor Target data are suppressed.

*The percentage of students tested in the current year fell below 95 percent, so the numbers of enrolled and tested students in the current year and previous year were combined to provide the school/district with another opportunity to meet the participation rate criterion.

† Includes former students with disabilities because the number of students with disabilities in the current year is equal to or greater than 30.

Elementary/Middle-Level Mathematics Results for Accountability

All accountability groups made AYP: YES

Student Group	Made AYP	Tested 95%	Students Enrolled During the Test Administration Period	Percent of Enrolled Students with Valid Test Scores	PI >= EAMO or Safe Harbor Target	Tested Students Enrolled on BEDS Day	PI	EAMO	Safe Harbor Target
All Students	✓	✓	1,858*	96%*	✓	828	98	75	75
American Indian or Alaska Native	—	—	1	—	—	1	—	—	—
Black or African American	—	—	24	—	—	22	—	—	—
Hispanic or Latino	—	—	13	—	—	12	—	—	—
Asian or Native Hawaiian/Other Pacific Islander	—	—	8	—	—	8	—	—	—
White	✓	✓	1,751*	96%*	✓	779	98	95	95
Multiracial	—	—	7	—	—	6	—	—	—
Students With Disabilities	✓	✓	316*	95%*	✓	144†	51†	28	28
Limited English Proficient	—	—	3	—	—	3	—	—	—
Economically Disadvantaged	✓	✓	795*	96%*	✓	355	67	56	56

Results for the following groups are NOT used to determine AYP.

Student Group	Students Enrolled During the Test Administration Period	Percent of Enrolled Students with Valid Test Scores	Tested Students Enrolled on BEDS Day	PI
Not American Indian or Alaska Native	1,855*	96%*	827	98
Not Black or African American	1,810*	96%*	806	99
Not Hispanic or Latino	1,832*	96%*	816	98
Not Asian or Native Hawaiian/Other Pacific Islander	1,840*	96%*	820	98
Not White	107*	97%*	49	94
Not Multiracial	1,846*	96%*	822	98
General Education	1,542*	96%*	692	108
English Proficient	1,852*	96%*	825	99
Not Economically Disadvantaged	1,063*	96%*	473	122
Male	977*	97%*	433	99
Female	881*	95%*	395	97
Migrant	1	—	0	—
Not Migrant	1,855*	96%*	828	98

✓ Yes

✗ No

— There were fewer than 40 students enrolled during the test administration period, so the Percent of Enrolled Students with Valid Test Scores data are suppressed OR there were fewer than 30 tested students enrolled on BEDS day and during the test administration period, so the PI, EAMO, and Safe Harbor Target data are suppressed.

*The percentage of students tested in the current year fell below 95 percent, so the numbers of enrolled and tested students in the current year and previous year were combined to provide the school/district with another opportunity to meet the participation rate criterion.

† Includes former students with disabilities because the number of students with disabilities in the current year is equal to or greater than 30.

Elementary/Middle-Level Science Results for Accountability

All accountability groups made AYP: YES

Student Group	Made AYP	Tested 80%	Students Enrolled During the Test Administration Period	Percent of Enrolled Students with Valid Test Scores	PI >= EAMO or Progress Target	Tested Students Enrolled on BEDS Day	PI	EAMO	Progress Target
All Students	✓	✓	314	97%	✓	292	186	175	175
American Indian or Alaska Native	—	—	1	—	—	1	—	—	—
Black or African American	—	—	6	—	—	6	—	—	—
Hispanic or Latino	—	—	5	—	—	4	—	—	—
Asian or Native Hawaiian/Other Pacific Islander	—	—	3	—	—	3	—	—	—
White	✓	✓	296	97%	✓	275	187	185	185
Multiracial	—	—	3	—	—	3	—	—	—
Students With Disabilities	✓	✓	57	93%	✓	52†	158†	145	145
Limited English Proficient	—	—	0	—	—	0	—	—	—
Economically Disadvantaged	✓	✓	129	97%	✓	116	176	161	161

Results for the following groups are NOT used to determine AYP.

Student Group	Students Enrolled During the Test Administration Period	Percent of Enrolled Students with Valid Test Scores	Tested Students Enrolled on BEDS Day	PI
Not American Indian or Alaska Native	313	97%	291	187
Not Black or African American	308	97%	286	187
Not Hispanic or Latino	309	97%	288	186
Not Asian or Native Hawaiian/Other Pacific Islander	311	97%	289	186
Not White	18	—	17	—
Not Multiracial	311	97%	289	186
General Education	257	98%	243	192
English Proficient	314	97%	292	186
Not Economically Disadvantaged	185	97%	176	193
Male	172	98%	161	185
Female	142	96%	131	188
Migrant	0	—	0	—
Not Migrant	314	97%	292	186

✓ Yes

X No

— There were fewer than 40 students enrolled during the test administration period, so the Percent of Enrolled Students with Valid Test Scores data are suppressed OR there were fewer than 30 tested students enrolled on BEDS day and during the test administration period, so the PI, EAMO, and Progress Target data are suppressed.

† Includes former students with disabilities because the number of students with disabilities in the current year is equal to or greater than 30.

All accountability groups made AYP: YES

Student Group	Made AYP	Tested 95%	12th Graders	Percent of 12th Graders with Valid Test Scores	PI >= EAMO or Safe Harbor Target	2009 Accountability Cohort Members	PI	EAMO	Safe Harbor Target
All Students	✓	✓	152	99%	✓	152	173	155	155
American Indian or Alaska Native	—	—	0	—	—	0	—	—	—
Black or African American	—	—	4	—	—	3	—	—	—
Hispanic or Latino	—	—	1	—	—	1	—	—	—
Asian or Native Hawaiian/Other Pacific Islander	—	—	2	—	—	3	—	—	—
White	✓	✓	145	99%	✓	145	173	167	167
Multiracial	—	—	0	—	—	0	—	—	—
Students With Disabilities	—	—	22	—	—	21	—	—	—
Limited English Proficient	—	—	0	—	—	0	—	—	—
Economically Disadvantaged	✓	✓	43	98%	✓	44	139	131	131

Results for the following groups are NOT used to determine AYP.

Student Group	12th Graders	Percent of 12th Graders with Valid Test Scores	2009 Accountability Cohort Members	PI
Not American Indian or Alaska Native	152	99%	152	173
Not Black or African American	148	99%	149	172
Not Hispanic or Latino	151	99%	151	173
Not Asian or Native Hawaiian/Other Pacific Islander	150	99%	149	174
Not White	7	—	7	—
Not Multiracial	152	99%	152	173
General Education	130	100%	131	188
English Proficient	152	99%	152	173
Not Economically Disadvantaged	109	100%	108	187
Male	70	100%	74	170
Female	82	99%	78	176
Migrant	0	—	0	—
Not Migrant	152	99%	152	173

✓ Yes

☒ No

— There were fewer than 40 12th graders, so the Percent of 12th Graders with Valid Test Scores data are suppressed OR there were fewer than 30 students in the 2009 accountability cohort, so PI, EAMQ, and Safe Harbor Target data are suppressed.

Secondary-Level Mathematics Results for Accountability

All accountability groups made AYP: NO

Student Group	Made AYP	Tested 95%	12th Graders	Percent of 12th Graders with Valid Test Scores	PI >= EAMO or Safe Harbor Target	2009 Accountability Cohort Members	PI	EAMO	Safe Harbor Target
All Students	✓	✓	152	100%	✓	152	136	134	128
American Indian or Alaska Native	—	—	0	—	—	0	—	—	—
Black or African American	—	—	4	—	—	3	—	—	—
Hispanic or Latino	—	—	1	—	—	1	—	—	—
Asian or Native Hawaiian/Other Pacific Islander	—	—	2	—	—	3	—	—	—
White	✓	✓	145	100%	✓	145	135	149	127
Multiracial	—	—	0	—	—	0	—	—	—
Students With Disabilities	—	—	22	—	—	21	—	—	—
Limited English Proficient	—	—	0	—	—	0	—	—	—
Economically Disadvantaged	✗	✓	43	100%	✗	44	102	108	108

Results for the following groups are NOT used to determine AYP.

Student Group	12th Graders	Percent of 12th Graders with Valid Test Scores	2009 Accountability Cohort Members	PI
Not American Indian or Alaska Native	152	100%	152	136
Not Black or African American	148	100%	149	136
Not Hispanic or Latino	151	100%	151	135
Not Asian or Native Hawaiian/Other Pacific Islander	150	100%	149	136
Not White	7	—	7	—
Not Multiracial	152	100%	152	136
General Education	130	100%	131	149
English Proficient	152	100%	152	136
Not Economically Disadvantaged	109	100%	108	149
Male	70	100%	74	128
Female	82	100%	78	142
Migrant	0	—	0	—
Not Migrant	152	100%	152	136

✓ Yes

✗ No

— There were fewer than 40 12th graders, so the Percent of 12th Graders with Valid Test Scores data are suppressed OR there were fewer than 30 students in the 2009 accountability cohort, so PI, EAMO, and Safe Harbor Target data are suppressed.

Unweighted Combined ELA and Math PIs

Student Group	Elementary/ Middle-Level ELA PI	Elementary/ Middle-Level Math PI	Secondary-Level ELA PI	Secondary-Level Math PI	Unweighted Combined PI
All Students	94	98	173	136	125
American Indian or Alaska Native	—	—	—	—	—
Black or African American	—	—	—	—	—
Hispanic or Latino	—	—	—	—	—
Asian or Native Hawaiian/Other Pacific Islander	—	—	—	—	—
White	94	98	173	135	125
Multiracial	—	—	—	—	—
Students With Disabilities	37	51	—	—	44
Limited English Proficient	—	—	—	—	—
Economically Disadvantaged	61	67	139	102	92

— There were not enough students to determine a Performance Index.

Overall Graduation Rate for Accountability

All accountability groups made AYP: YES

Student Group	Made AYP
All Students	✓
American Indian or Alaska Native	—
Black or African American	—
Hispanic or Latino	—
Asian or Native Hawaiian/Other Pacific Islander	—
White	✓
Multiracial	—
Students With Disabilities	✓
Limited English Proficient	—
Economically Disadvantaged	✓

- ✓ Made AYP
- ✗ Did not make AYP
- There were not enough students to make an AYP determination.

Four-Year Graduation-Rate Total Cohort for Accountability

Student Group	Met Graduation-Rate Criterion	2008 Four-Year Graduation-Rate Total Cohort	Graduation Rate	State Standard	Progress Target
All Students	X	176	76%	80%	80%
American Indian or Alaska Native	—	0	—	—	—
Black or African American	—	5	—	—	—
Hispanic or Latino	—	2	—	—	—
Asian or Native Hawaiian/Other Pacific Islander	—	1	—	—	—
White	X	168	76%	80%	80%
Multiracial	—	0	—	—	—
Students With Disabilities	✓	34†	47%†	80%	42%
Limited English Proficient	—	0	—	—	—
Economically Disadvantaged	X	57	58%	80%	75%

✓ Graduation rate is equal to or greater than the State Standard or the group's Progress Target.

X Graduation rate is less than the State Standard and the group's Progress Target.

— There were fewer than 30 students in the cohort.

† Includes former students with disabilities because the number of students with disabilities in the current year is equal to or greater than 30.

Five-Year Graduation-Rate Total Cohort for Accountability

Student Group	Met Graduation-Rate Criterion	2007 Five-Year Graduation-Rate Total Cohort	Graduation Rate	State Standard	Progress Target
All Students	✓	173	82%	80%	80%
American Indian or Alaska Native	—	0	—	—	—
Black or African American	—	2	—	—	—
Hispanic or Latino	—	0	—	—	—
Asian or Native Hawaiian/Other Pacific Islander	—	1	—	—	—
White	✓	170	82%	80%	79%
Multiracial	—	0	—	—	—
Students With Disabilities	—	26	—	—	—
Limited English Proficient	—	0	—	—	—
Economically Disadvantaged	✓	53	74%	80%	70%

✓ Graduation rate is equal to or greater than the State Standard or the group's Progress Target.

✗ Graduation rate is less than the State Standard and the group's Progress Target.

— There were fewer than 30 students in the cohort.

Graduation Rates for Non-AYP Groups for Accountability

Results for the following groups are NOT used to determine AYP.

Student Group	Four-Year Graduation-Rate Total Cohort		Five-Year Graduation-Rate Total Cohort	
	2008 Four-Year Graduation-Rate Total Cohort	Graduation Rate	2007 Five-Year Graduation-Rate Total Cohort	Graduation Rate
Not American Indian or Alaska Native	176	76%	173	82%
Not Black or African American	171	76%	171	82%
Not Hispanic or Latino	174	76%	173	82%
Not Asian or Native Hawaiian/Other Pacific Islander	175	76%	172	82%
Not White	8	—	3	—
Not Multiracial	176	76%	173	82%
General Education	142	83%	147	90%
English Proficient	176	76%	173	82%
Not Economically Disadvantaged	119	85%	120	86%
Male	95	72%	92	77%
Female	81	81%	81	88%
Migrant	0	—	0	—
Not Migrant	176	76%	173	82%

— There were fewer than 30 students in the cohort.

Graduation Rates for Regents with Advanced Designation and CTE Endorsement for Accountability

Percentage of 2008 Graduation-Rate Total Cohort members who graduated as of August 31, 2012 with:

Regents Diploma with an Advanced Designation (This District)	Regents Diploma with an Advanced Designation (Statewide)	Percentage in This District Exceeded Statewide
26%	30%	NO
Regents Diploma with CTE Endorsement (This District)	Regents Diploma with CTE Endorsement (Statewide)	Percentage in This District Exceeded Statewide
1%	3%	NO

